

Ottimizzazione dei Sistemi Complessi

G. Liuzzi¹

Mercoledì 22 Aprile 2020

¹Istituto di Analisi dei Sistemi ed Informatica IASI - CNR

Introduzione

We consider the problem

$$\begin{array}{ll} \min_x & f(x) \\ \text{c.v.} & g(x) \geq 0 \end{array}$$

- \mathcal{F} feasible region
- $\overset{\circ}{\mathcal{F}} = \text{Int}(\mathcal{F}) = \{x \in \mathbb{R}^n : g_i(x) > 0\}$
- We assume $\overset{\circ}{\mathcal{F}} \neq \emptyset$

Log-barrier function

For the considered problem:

$$P(x; \mu) = f(x) - \mu \sum_{i=1}^m \log g_i(x), \text{ dove}$$

$$b(x) = - \sum_{i=1}^m \log g_i(x) \text{ (termine di barriera)}$$

$$\nabla_x P(x; \mu) = \nabla f(x) - \sum_{i=1}^m \frac{\mu}{g_i(x)} \nabla g_i(x)$$

N.B.

- $b(x)$ (and $P(x; \mu)$) is defined for all $x \in \overset{\circ}{\mathcal{F}}$
- We assume $b(x)$ (and $P(x; \mu)$) = $+\infty$ for all $x \notin \overset{\circ}{\mathcal{F}}$

Example 1

$$\begin{array}{ll} \min_x & x \\ \text{c.v.} & x \geq 0 \\ & 1 - x \geq 0 \end{array}$$

The log-barrier function for this problem is

$$P(x; \mu) = x - \mu \log x - \mu \log(1 - x)$$

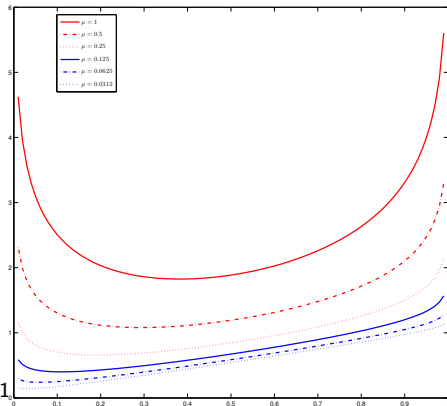
$$\nabla P(x; \mu) = 1 - \frac{\mu}{x} + \frac{\mu}{1 - x} = 0$$

$$\frac{x(1 - x) - \mu(1 - x) + \mu x}{x(1 - x)} = 0$$

$$x^2 - (1 + 2\mu)x + \mu = 0$$

$$0 < x^- = \frac{1}{2} + \mu - \sqrt{\left(\frac{1}{2} + \mu\right)^2 - \mu} < 1$$

$$x^+ = \frac{1}{2} + \mu + \sqrt{\frac{1}{4} + \mu^2} > 1 \Rightarrow x^+ \notin \mathcal{F}$$



Example 1

$$\begin{array}{ll} \min_x & x \\ \text{c.v.} & x \geq 0 \\ & 1 - x \geq 0 \end{array}$$

The log-barrier function for this problem is

$$P(x; \mu) = x - \mu \log x - \mu \log(1 - x)$$

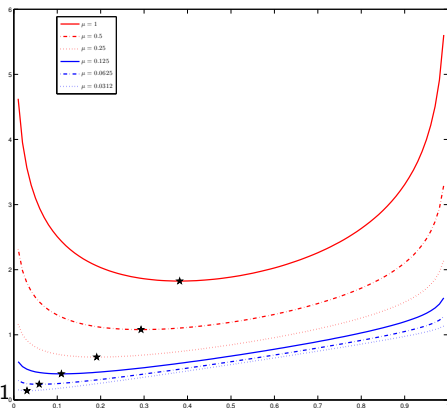
$$\nabla P(x; \mu) = 1 - \frac{\mu}{x} + \frac{\mu}{1 - x} = 0$$

$$\frac{x(1 - x) - \mu(1 - x) + \mu x}{x(1 - x)} = 0$$

$$x^2 - (1 + 2\mu)x + \mu = 0$$

$$0 < x^- = \frac{1}{2} + \mu - \sqrt{\left(\frac{1}{2} + \mu\right)^2 - \mu} < 1$$

$$x^+ = \frac{1}{2} + \mu + \sqrt{\frac{1}{4} + \mu^2} > 1 \Rightarrow x^+ \notin \mathcal{F}$$



Example 1

$$\begin{array}{ll} \min_x & x \\ \text{c.v.} & x \geq 0 \\ & 1 - x \geq 0 \end{array}$$

The log-barrier function for this problem is

$$P(x; \mu) = x - \mu \log x - \mu \log(1 - x)$$

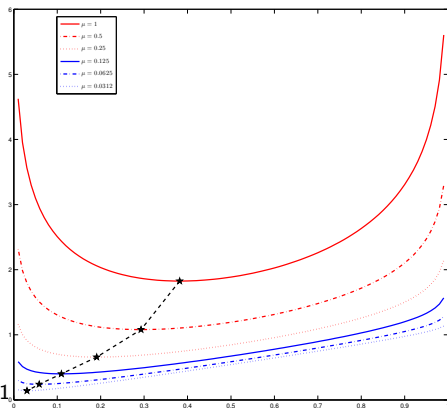
$$\nabla P(x; \mu) = 1 - \frac{\mu}{x} + \frac{\mu}{1 - x} = 0$$

$$\frac{x(1 - x) - \mu(1 - x) + \mu x}{x(1 - x)} = 0$$

$$x^2 - (1 + 2\mu)x + \mu = 0$$

$$0 < x^- = \frac{1}{2} + \mu - \sqrt{\left(\frac{1}{2} + \mu\right)^2 - \mu} < 1$$

$$x^+ = \frac{1}{2} + \mu + \sqrt{\frac{1}{4} + \mu^2} > 1 \Rightarrow x^+ \notin \mathcal{F}$$



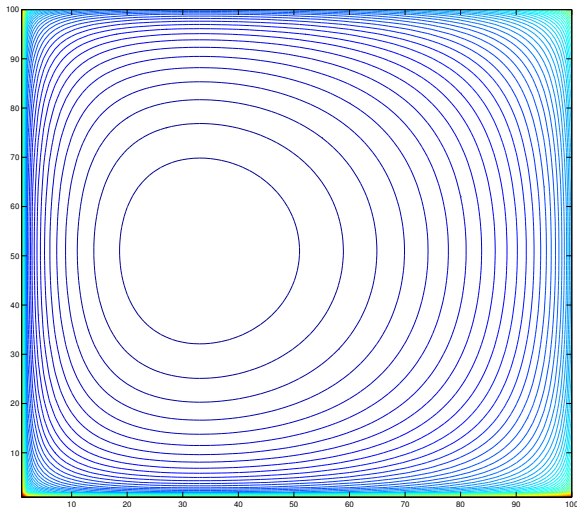
Example 2

$$\begin{aligned} \min_x \quad & (x + 0.5)^2 + (x_2 - 0.5)^2 \\ \text{c.v.} \quad & x_1 \in [0, 1], \quad x_2 \in [0, 1] \end{aligned}$$

The log-barrier function for this problem is

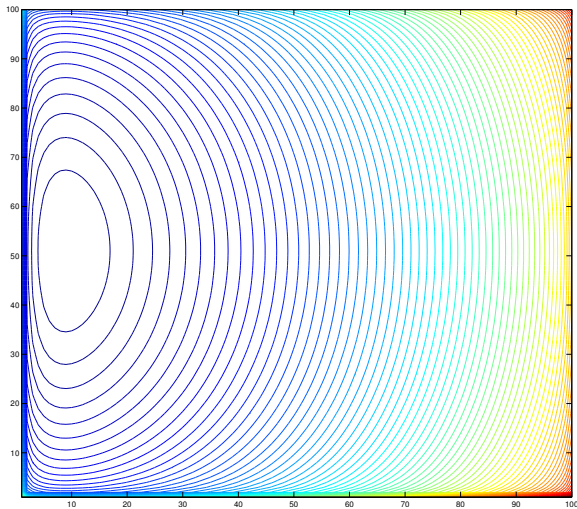
$$\begin{aligned} P(x; \mu) = & (x + 0.5)^2 + (x_2 - 0.5)^2 \\ & -\mu[\log x_1 + \log(1 - x_1)] \\ & -\mu[\log x_2 + \log(1 - x_2)] \end{aligned}$$

Example 2



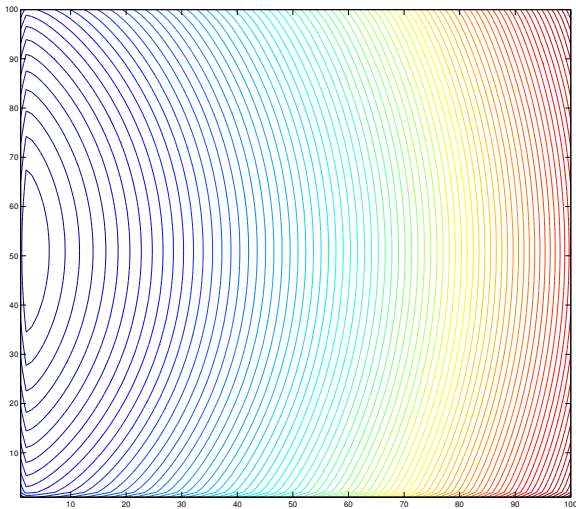
$$\mu = 1$$

Example 2



$$\mu = 0.1$$

Example 2



$$\mu = 0.01$$

Example 2

When $\mu = 1 \rightarrow 0.0085$ we have

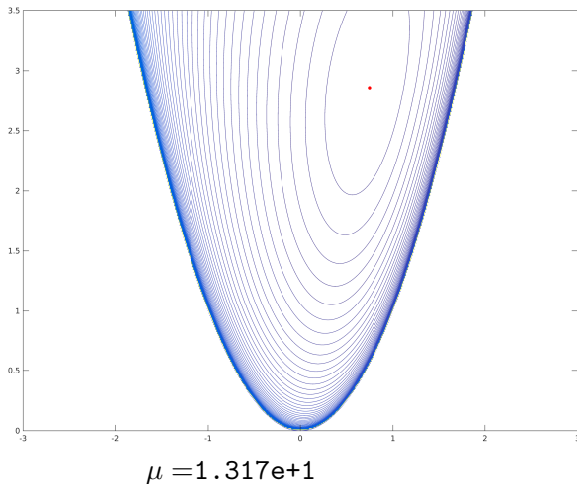
Example 3 (HS 11)

$$\begin{array}{ll} \min_x & (x - 5)^2 + y^2 \\ \text{s.t.} & -x^2 + y \geq 0 \end{array}$$

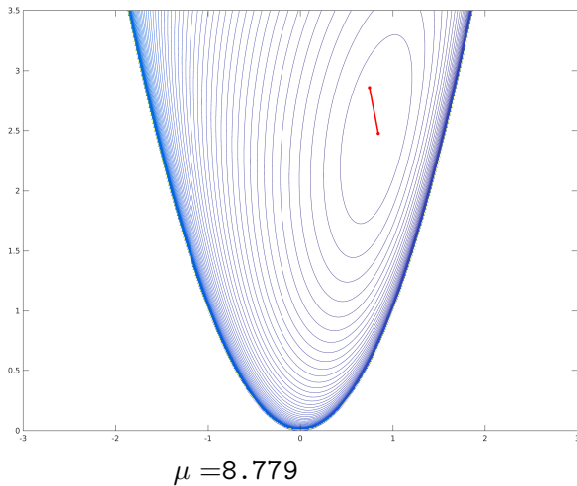
The log-barrier function for this problem is

$$P(x; \mu) = (x - 5)^2 + y^2 - \mu[\log(y - x^2)]$$

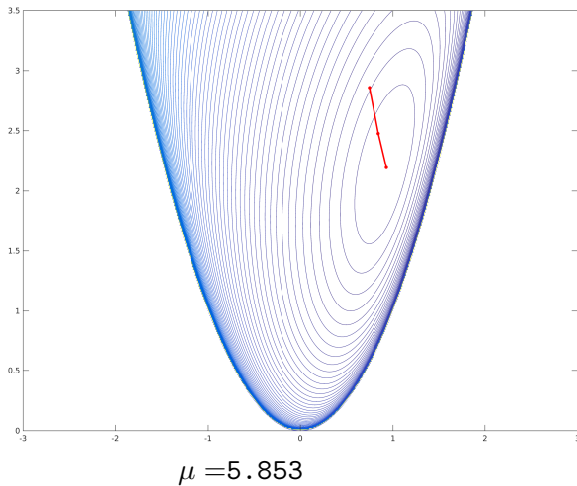
Example 3



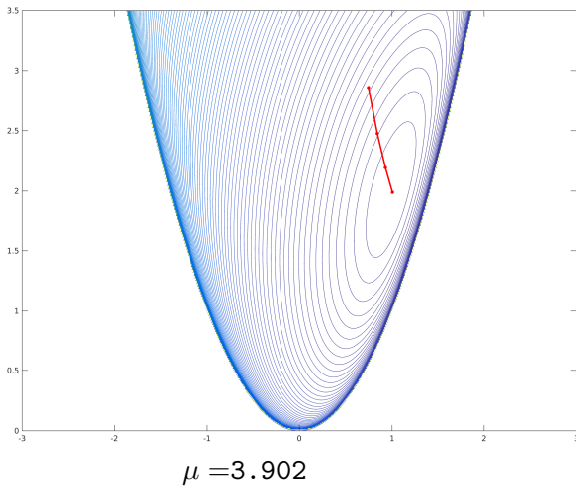
Example 3



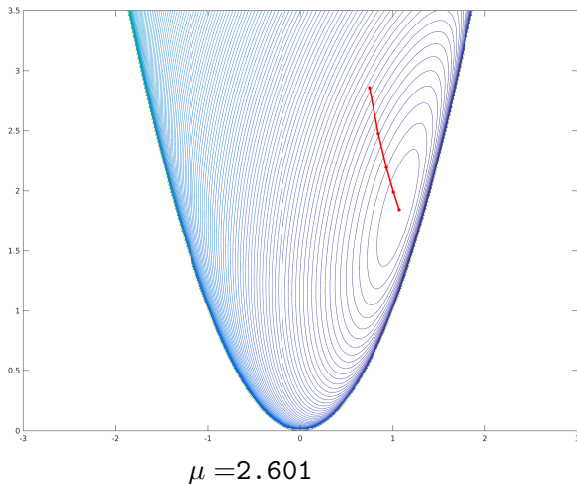
Example 3



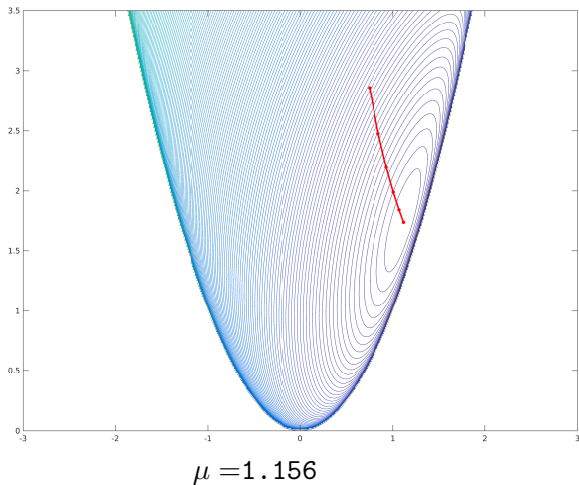
Example 3



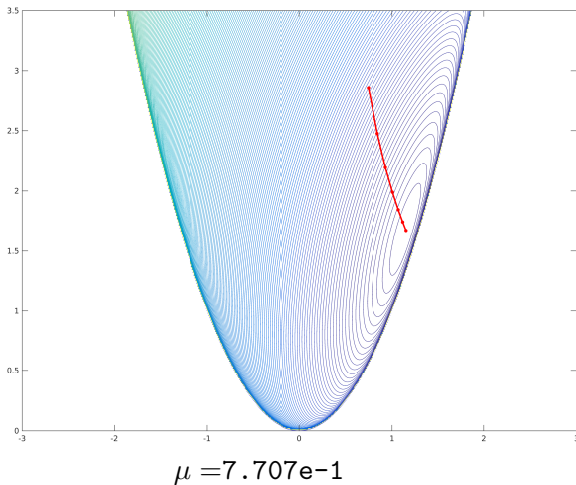
Example 3



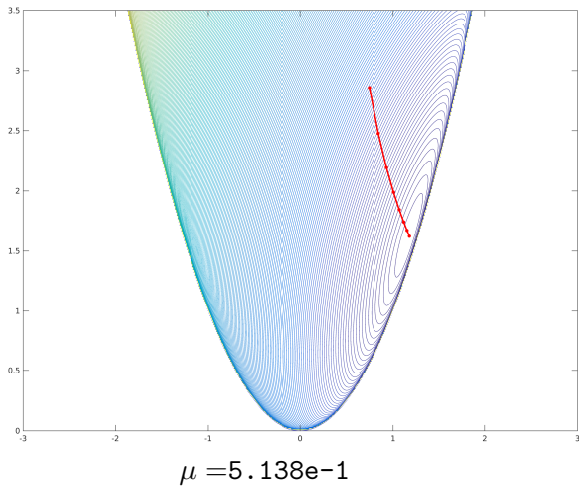
Example 3



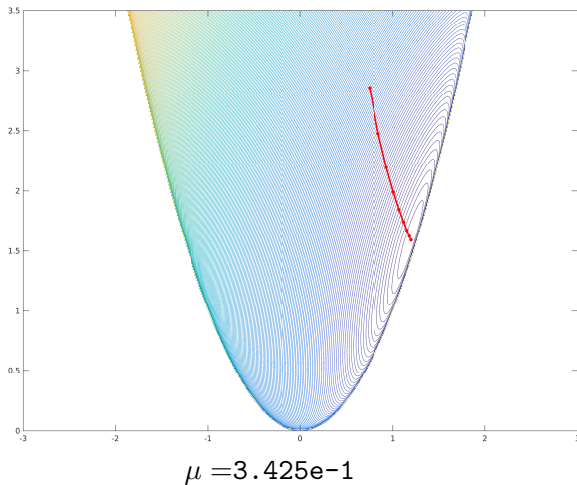
Example 3



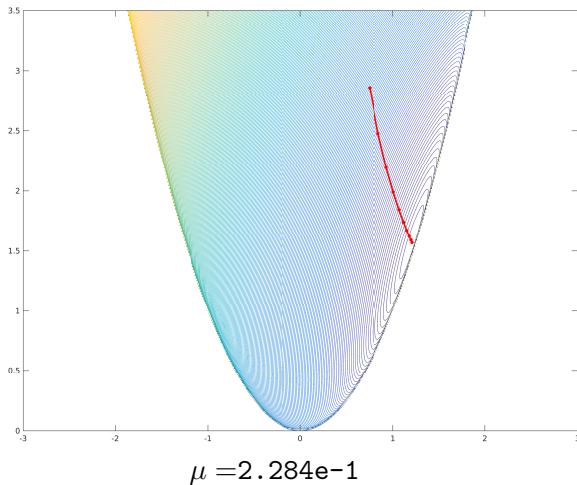
Example 3



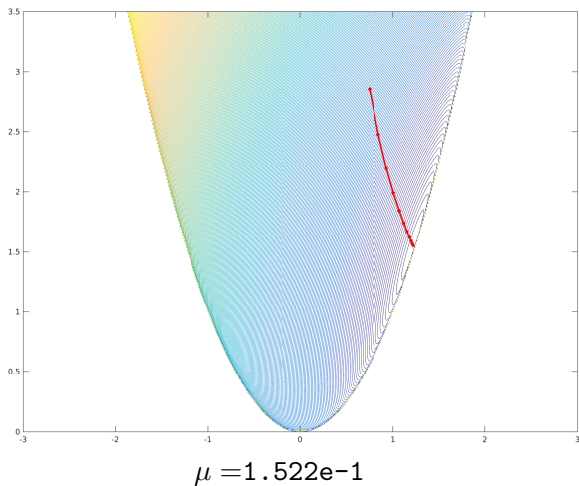
Example 3



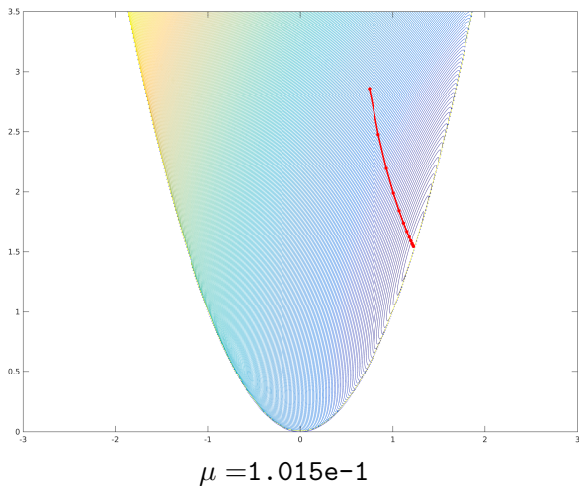
Example 3



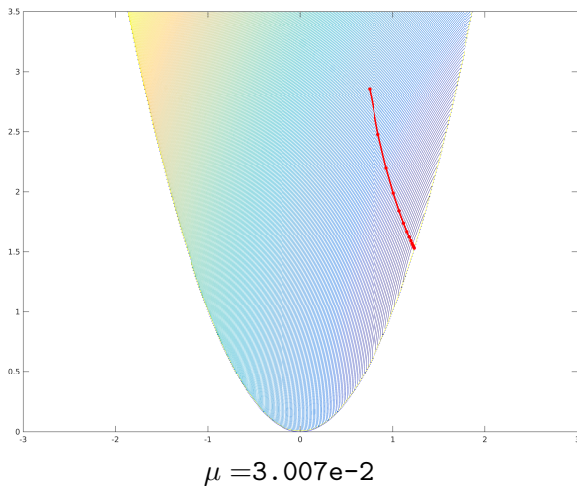
Example 3



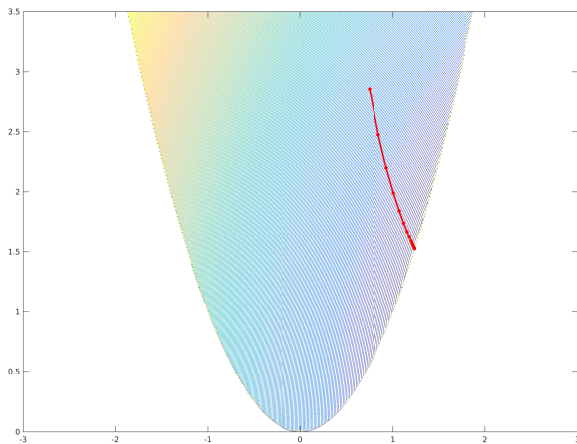
Example 3



Example 3

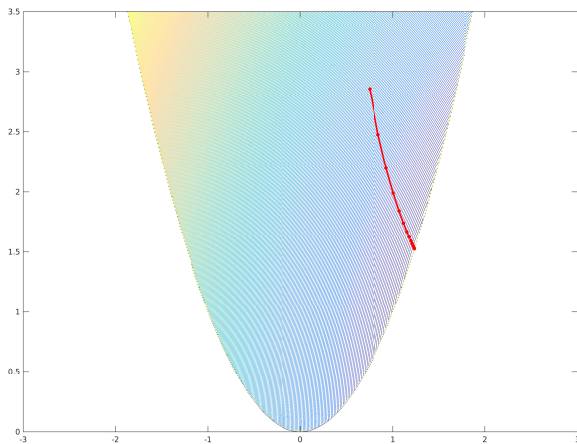


Example 3



$\mu = 8.910e-3$ KKT error = $8.910e-3$

Example 3



$\mu = 8.910e-3$ KKT error = $8.910e-3$

KKT conditions – stationary points of $P(x; \mu)$

KKT point

Let (x, λ) be a KKT pair

$$\begin{aligned}\nabla f(x) - \lambda^\top \nabla g(x) &= 0 \\ g(x) &\geq 0 \\ \lambda &\geq 0 \\ \lambda^\top g(x) &= 0\end{aligned}$$

Stationary point of $P(x; \mu)$

Let $x(\mu)$ be such that

$$\begin{aligned}\nabla f(x(\mu)) - \sum_{i=1}^m \lambda_i(\mu) \nabla g_i(x(\mu)) &= 0 \\ \lambda_i(\mu) &= \frac{\mu}{g_i(x(\mu))}\end{aligned}$$

The pair $(x(\mu), \lambda(\mu))$

- defines the so-called **central-path** or **interior-path**
- it is “almost” a KKT pair; complementary slackness $\lambda^\top g(x) = 0$ is violated
- but we have:

$$\lambda_i(\mu) g_i(x(\mu)) = \mu$$

KKT conditions – stationary points of $P(x; \mu)$

KKT point

Let (x, λ) be a KKT pair

$$\begin{aligned}\nabla f(x) - \lambda^\top \nabla g(x) &= 0 \\ g(x) &\geq 0 \\ \lambda &\geq 0 \\ \lambda^\top g(x) &= 0\end{aligned}$$

Stationary point of $P(x; \mu)$ Let $x(\mu)$ be such that

$$\begin{aligned}\nabla f(x(\mu)) - \sum_{i=1}^m \lambda_i(\mu) \nabla g_i(x(\mu)) &= 0 \\ \lambda_i(\mu) &= \frac{\mu}{g_i(x(\mu))}\end{aligned}$$

The pair $(x(\mu), \lambda(\mu))$

- defines the so-called **central-path** or **interior-path**
- it is “almost” a KKT pair; complementary slackness $\lambda^\top g(x) = 0$ is violated
- but we have:

$$\lambda_i(\mu) g_i(x(\mu)) = \mu$$

An inexact solution method

Algorithm LOG-BARRIER

Data: $\mu_0 > \mu_{tol} > 0$, maxit, x_0 s.t. $g(x_0) > 0$

for $k = 0, 1, \dots, \text{maxit}$

 Compute $x_k = x(\mu_k)$ t.c. $\|\nabla P(x_k; \mu_k)\| \leq \mu_k$

 if $\mu_k < \mu_{tol}$ then

$x^* \leftarrow x_k, \lambda^* \leftarrow \mu_k/g(x_k)$. STOP

 endif

endfor

Return: (x^*, λ^*)

An inexact solution method

Algorithm LOG-BARRIER

Data: $\mu_0 > \mu_{tol} > 0$, maxit, x_0 s.t. $g(x_0) > 0$

for $k = 0, 1, \dots, \text{maxit}$

 Compute $x_k = x(\mu_k)$ t.c. $\|\nabla P(x_k; \mu_k)\| \leq \mu_k$

if $\mu_k < \mu_{tol}$ **then**

$x^* \leftarrow x_k, \lambda^* \leftarrow \mu_k/g(x_k)$, STOP

endif

 Choose $\mu_{k+1} \in (0, \mu_k)$

endfor

Return: (x^*, λ^*)

An inexact solution method

Algorithm LOG-BARRIER

Data: $\mu_0 > \mu_{tol} > 0$, maxit, x_0 s.t. $g(x_0) > 0$

for $k = 0, 1, \dots, \text{maxit}$

 Compute $x_k = x(\mu_k)$ t.c. $\|\nabla P(x_k; \mu_k)\| \leq \mu_k$

if $\mu_k < \mu_{tol}$ **then**

$x^* \leftarrow x_k, \lambda^* \leftarrow \mu_k/g(x_k)$, STOP

endif

 Choose $\mu_{k+1} \in (0, \mu_k)$

endfor

Return: (x^*, λ^*)

An inexact solution method

Algorithm LOG-BARRIER

Data: $\mu_0 > \mu_{tol} > 0$, maxit, x_0 s.t. $g(x_0) > 0$

for $k = 0, 1, \dots, \text{maxit}$

 Compute $x_k = x(\mu_k)$ t.c. $\|\nabla P(x_k; \mu_k)\| \leq \mu_k$

if $\mu_k < \mu_{tol}$ **then**

$x^* \leftarrow x_k$, $\lambda^* \leftarrow \mu_k/g(x_k)$, STOP

endif

 Choose $\mu_{k+1} \in (0, \mu_k)$

endfor

Return: (x^*, λ^*)

Equality constraints

Let us consider the problem

$$\begin{array}{ll} \min_x & f(x) \\ \text{c.v.} & g(x) \geq 0 \\ & h(x) = 0 \end{array}$$

The log-barrier function is

$$\begin{aligned} P(x; \mu) &= f(x) - \mu \sum_{i=1}^m \log g_i(x) + \frac{1}{2\mu} \|h(x)\|^2 \\ \nabla_x P(x; \mu) &= \nabla f(x) - \sum_{i=1}^m \frac{\mu}{g_i(x)} \nabla g_i(x) + \frac{1}{\mu} \sum_{i=1}^p h_i(x) \nabla h_i(x) \end{aligned}$$

Initial point

since,

$$P(x; \mu) < +\infty \text{ iff } g(x) > 0,$$

then ...

in order to use $P(x; \mu)$ within a practical solution method a strictly feasible point x_0 , i.e. $g(x_0) > 0$, must be known (see LOG-BARRIER).

Initial point

since,

$$P(x; \mu) < +\infty \text{ iff } g(x) > 0,$$

then ...

in order to use $P(x; \mu)$ within a practical solution method a strictly feasible point x_0 , i.e. $g(x_0) > 0$, must be known (see LOG-BARRIER).

Slack variables

$$\begin{array}{ll} \min_x & f(x) \\ \text{c.v.} & g(x) \geq 0 \end{array} \quad \rightsquigarrow \quad \begin{array}{ll} \min_{x,s} & f(x) \\ \text{c.v.} & g_i(x) - s_i = 0 \\ & \boxed{s_i \geq 0} \end{array}$$

$$P(x, s; \mu) = f(x) - \mu \sum_{i=1}^m \log s_i + \frac{1}{2\mu} \sum_{i=1}^m (g_i(x) - s_i)^2$$

Minimize $P(x, s; \mu)$ over x, s

Minimize $P(x, s; \mu)$ over $x, s, \mu > 0$

Slack variables

$$\begin{array}{ll}
 \min_x & f(x) \\
 \text{c.v.} & g(x) \geq 0
 \end{array}
 \quad \rightsquigarrow \quad
 \begin{array}{ll}
 \min_{x,s} & f(x) \\
 \text{c.v.} & g_i(x) - s_i = 0 \\
 & \boxed{s_i \geq 0}
 \end{array}$$

$$P(x, s; \mu) = f(x) - \mu \sum_{i=1}^m \log s_i + \frac{1}{2\mu} \sum_{i=1}^m (g_i(x) - s_i)^2$$

Infeasible Interior Point Methods

N.B. $P(x; \mu)$ defined even when $g(x) \not\geq 0$

Slack variables

$$\begin{array}{ll} \min_x & f(x) \\ \text{c.v.} & g(x) \geq 0 \end{array} \quad \rightsquigarrow \quad \begin{array}{ll} \min_{x,s} & f(x) \\ \text{c.v.} & g_i(x) - s_i = 0 \\ & \boxed{s_i \geq 0} \end{array}$$

$$P(x, s; \mu) = f(x) - \mu \sum_{i=1}^m \log s_i + \frac{1}{2\mu} \sum_{i=1}^m (g_i(x) - s_i)^2$$

Infeasible Interior Point Methods

N.B. $P(x; \mu)$ defined even when $g(x) \not\geq 0$

Slack variables

$$\begin{array}{ll} \min_x & f(x) \\ \text{c.v.} & g(x) \geq 0 \end{array} \quad \rightsquigarrow \quad \begin{array}{ll} \min_{x,s} & f(x) \\ \text{c.v.} & g_i(x) - s_i = 0 \\ & \boxed{s_i \geq 0} \end{array}$$

$$P(x, s; \mu) = f(x) - \mu \sum_{i=1}^m \log s_i + \frac{1}{2\mu} \sum_{i=1}^m (g_i(x) - s_i)^2$$

Infeasible Interior Point Methods

N.B. $P(x; \mu)$ defined even when $g(x) \not\geq 0$

Relation with KKT

$$\begin{aligned} \min_{x,s} \quad & f(x) \\ \text{c.v.} \quad & g_i(x) - s_i = 0 \\ & s_i \geq 0 \end{aligned}$$

Lagrangian function: $L(x, s, \rho, \lambda) = f(x) + \rho^\top (g - s) - \lambda^\top s$

KKT conditions:

$$\begin{aligned} \nabla_x L &= \nabla f(x) + \sum_{i=1}^m \rho_i \nabla g_i(x) = 0 \\ \nabla_s L &= -\rho - \lambda = 0 \Rightarrow \rho = -\lambda \\ g - s &= 0 \\ \lambda &\geq 0, s \geq 0, \lambda^\top s = 0 \end{aligned}$$

Relation with KKT

$$\begin{aligned} \min_{x,s} \quad & f(x) \\ \text{c.v.} \quad & g_i(x) - s_i = 0 \\ & s_i \geq 0 \end{aligned}$$

Lagrangian function: $L(x, s, \rho, \lambda) = f(x) + \rho^\top (g - s) - \lambda^\top s$

KKT conditions:

$$\begin{aligned} \nabla_x L &= \nabla f(x) + \sum_{i=1}^m \rho_i \nabla g_i(x) = 0 \\ \nabla_s L &= -\rho - \lambda = 0 \Rightarrow \rho = -\lambda \\ g - s &= 0 \\ \lambda &\geq 0, s \geq 0, \lambda^\top s = 0 \end{aligned}$$

Relation with KKT

$$\begin{aligned} \min_{x,s} \quad & f(x) \\ \text{c.v.} \quad & g_i(x) - s_i = 0 \\ & s_i \geq 0 \end{aligned}$$

Lagrangian function: $L(x, s, \rho, \lambda) = f(x) + \rho^\top (g - s) - \lambda^\top s$

KKT conditions:

$$\begin{aligned} \nabla_x L &= \nabla f(x) - \sum_{i=1}^m \lambda_i \nabla g_i(x) = 0 \\ \nabla_s L &= -\rho - \lambda = 0 \Rightarrow \rho = -\lambda \\ g - s &= 0 \\ \lambda &\geq 0, s \geq 0, \lambda^\top s = 0 \end{aligned}$$

Relation with KKT

$$\min_{x,s} P(x, s; \mu)$$

$$P(x, s; \mu) = f(x) - \mu \sum_{i=1}^m \log s_i + \frac{1}{2\mu} \sum_{i=1}^m (g_i(x) - s_i)^2$$

$$\nabla_x P = \nabla f(x) + \sum_{i=1}^m \frac{g_i(x) - s_i}{\mu} \nabla g_i(x) = 0$$

$$\nabla_{s_i} P = -\frac{\mu}{s_i} - \frac{g_i(x) - s_i}{\mu} = 0 \Rightarrow \frac{g_i(x) - s_i}{\mu} = -\frac{\mu}{s_i} = -\lambda_i$$

$$\lambda_i s_i = \mu, \quad g_i(x) - s_i = -\frac{\mu^2}{s_i} = -\lambda_i \mu$$

Relation with KKT

$$\min_{x,s} P(x, s; \mu)$$

$$P(x, s; \mu) = f(x) - \mu \sum_{i=1}^m \log s_i + \frac{1}{2\mu} \sum_{i=1}^m (g_i(x) - s_i)^2$$

$$\nabla_x P = \nabla f(x) + \sum_{i=1}^m \frac{g_i(x) - s_i}{\mu} \nabla g_i(x) = 0$$

$$\nabla_{s_i} P = -\frac{\mu}{s_i} - \frac{g_i(x) - s_i}{\mu} = 0 \Rightarrow \frac{g_i(x) - s_i}{\mu} = -\frac{\mu}{s_i} = -\lambda_i$$

$$\lambda_i s_i = \mu, \quad g_i(x) - s_i = -\frac{\mu^2}{s_i} = -\lambda_i \mu$$

Relation with KKT

$$\min_{x,s} P(x, s; \mu)$$

$$P(x, s; \mu) = f(x) - \mu \sum_{i=1}^m \log s_i + \frac{1}{2\mu} \sum_{i=1}^m (g_i(x) - s_i)^2$$

$$\nabla_x P = \nabla f(x) - \sum_{i=1}^m \lambda_i \nabla g_i(x) = 0$$

$$\nabla_{s_i} P = -\frac{\mu}{s_i} - \frac{g_i(x) - s_i}{\mu} = 0 \rightarrow \frac{g_i(x) - s_i}{\mu} = -\frac{\mu}{s_i} = -\lambda_i$$

$$\lambda_i s_i = \mu, \quad g_i(x) - s_i = -\frac{\mu^2}{s_i} = -\lambda_i \mu$$